

<sup>1</sup>  
**June 2019**

# The New Leaf

CLARKE COUNTY CONSERVATION BOARD AND  
FRIENDS

## UPCOMING EVENTS:

- June 18<sup>th</sup> Free Canoe Night
- June 27 Thursday Night in the Park - Conservation night
- June 29 VanAhn memorial Fishing Tournament – East Lake Park
- June 24-28 Week 1 of Conservation Day Camp
- June 25<sup>th</sup> Free Canoe Night
- July 2<sup>nd</sup> Free Canoe Night
- July 8-12 Week 2 of Conservation Day Camp
- July 9<sup>th</sup> Free Canoe Night
- July 15-19 Week 3 of Conservation Day Camp
- July 16<sup>th</sup> Free Canoe Night
- July 18 Southern Iowa Hive Handlers Monthly Bee Mtg
- July 30, Aug 1, 6, 8 One day Day Camps
- July 30<sup>th</sup> Free Canoe Night 5-8pm
- Aug 6<sup>th</sup> Free Canoe Night 5-8pm
- Aug 13<sup>th</sup> Free Canoe Night 5-8pm
- Sept 8 Hopeville Rural Music Reunion
- Sept 21 Horseshoe Tournament
- Sept 21 50/100 Mile East Lake Ultra Run
- Oct 1 Clarke Cross Country Meet
- Oct 15 Conference Cross Country Meet

### Contact

### Information

#### Address:

2451 Highway 34  
Osceola, IA 50213

#### Phone:

641-342-3960

#### Facebook:

[https://  
www.facebook.com/  
clarkeccb/](https://www.facebook.com/clarkeccb/)

#### Email:

[clarkeccb@gmail.com](mailto:clarkeccb@gmail.com)

### Conservation

#### Director :

Scott Kent



## Southern Iowa Hive Handlers Introduces High School Youth to Beekeeping

By: Judy Kjellsen



Scott Kent explains the parts of the hive



### Friends Members:

Stephanie Snell - President

Spencer Seeberger - VP

Scott Kent - Secretary

Bev Seeberger - Treasure

Marilyn Dorland - Director

Allan Mathias - Director

Frank Riley - Director

Larry Keller - Director

Steve Harvey—Director

Anna Harvey—Director

### CCCB Board Members:

Sharon Dunfee

Larry Keller

Norm Lust

Elisabeth Reynoldson

Frank Riley

### Park Technicians:

Chris Reyna

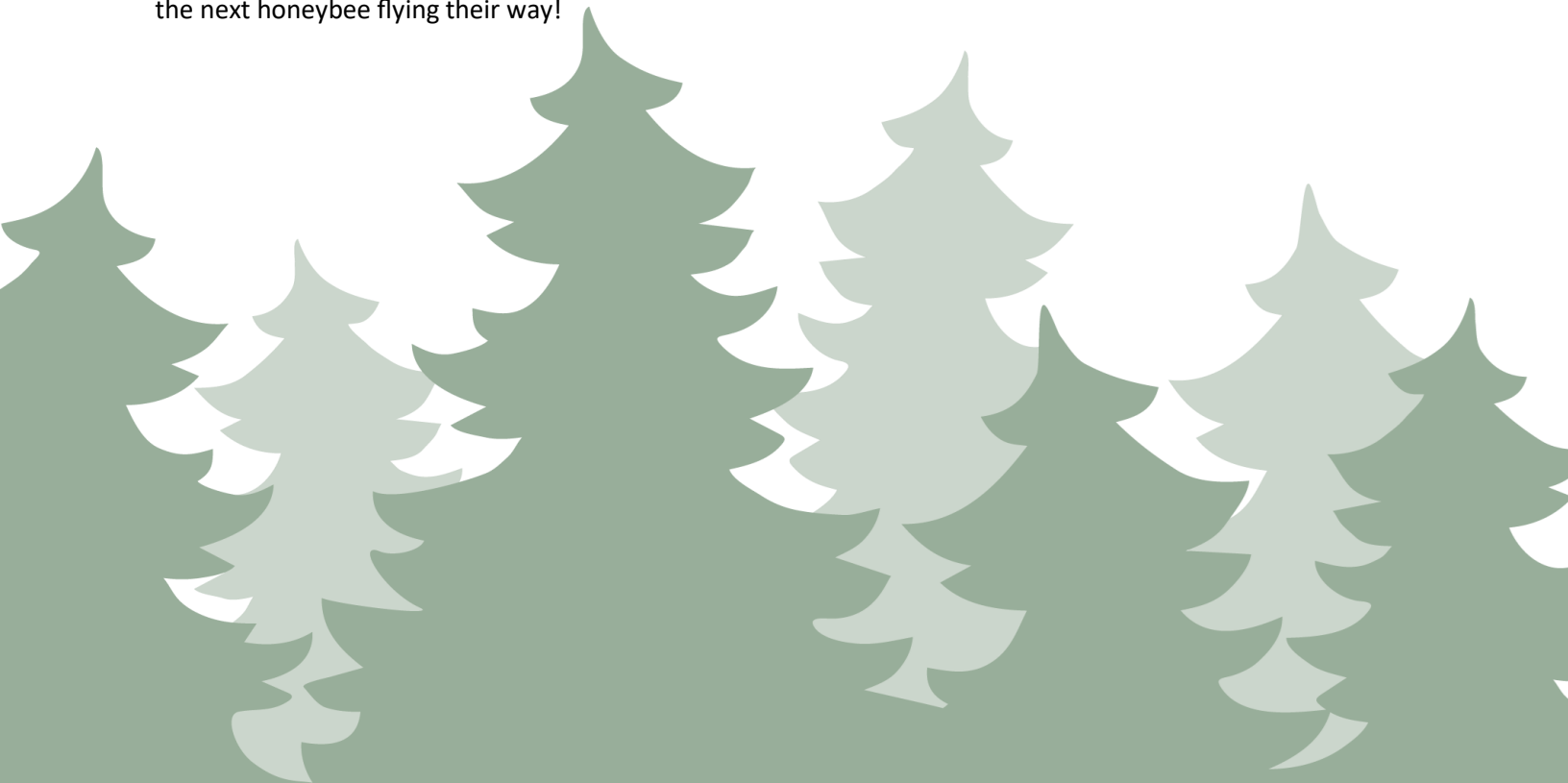
Willard DeLong

# The Southern Iowa Hive Handlers Club

The Southern Iowa Hive Handlers started 3 years ago when Clarke County Conservation Director, Scott Kent and beekeeper, Rose Greif taught beginning beekeeping to a small group of interested “newbees” and experienced beekeepers. With classes offered again in 2018 and 2019 at Honey Hill in Osceola, the club has grown to over 60 active members and continues to grow. They meet once a month at East Lake Park to share ideas, ask questions, and offer advice about each other’s hives. Members have also shared anything from wildflower seeds and plants to ointments, and even mead! A Facebook page is visited by 188 people who also answer questions, promote, and troubleshoot with members throughout Iowa.

When Farm & Home in Osceola donated a hive box to the club, the members decided the donation should go to the FFA Club at Clarke High School to help educate the next generation about the importance of the honeybees. Four students contacted one of the members, saying they were interested in beekeeping for their FFA project. They got to help inspect a hive and were shown what to look for in a healthy hive. Knowing the importance of timing for starting a new hive, Scott and Rose went to work to locate a nuc and Greif Farms generously donated the nuc to the students to get them started. The club met on May 16<sup>th</sup>, rounded up some spare bee suits and gave the kids their first hands-on experience with installing a nuc. After learning the parts of the hive, Craig Green showed the students the difference between the worker bees, drones and the queen. After filling the hive feeder with syrup, they transported the frames from the nuc into the new hive and finished setting up the hive. As their school year comes to an end, their homework continues! First on the list: shopping for bee suits and a 2<sup>nd</sup> hive box, followed by another inspection to check on their project. They’re already talking about investing in a second hive!

The club is excited to introduce the new members and mentor them on their journey into beekeeping. Hopefully, they will motivate their friends to follow in the years to come, or at least save, instead of swat, the next honeybee flying their way!



# Pate will host Day Camps and Canoe nights at East Lake Park this summer!

This summer I will be serving as Clarke County as the local AmeriCorps environmental education member. I grew up in Osceola, IA and graduated from Clarke High School in 2011. During this time, I became an Eagle Scout while participating in school activities ranging from band to tennis. After graduating, I attended the University of Iowa, where I played in the Hawkeye Marching Band, and earned a Bachelor of Arts in history. While in college, I spent my summers “Up North” in the Boundary Waters of Northern Minnesota and Southern Canada working as a canoe guide for the Boy Scouts. Currently, I work as a teacher at Winterset High School teaching classes ranging from history and geography to economics.

I am excited to be working as an AmeriCorps environmental education member in Clarke County this summer. This is a position designed to educate youth and create more community involvement with the county parks. The first part of my position involves exposing and educating youth about nature. This will be done through the day camps being offered in late June and July. These camps will be two hours a day for five days and will give kids the opportunity to learn about plants, animals and even learn some camping or other outdoor skills such as using a compass. Later this summer, single day camps will be offered each having a focused theme.

Community outreach will be the second part of my position this summer. The goal is to get more members of our community using and enjoying our local parks. From camping, hiking, fishing, to public gatherings and even biking, there is much the county parks can offer. One planned upcoming event is Free Canoe Night at East Lake Park on Tuesday nights this summer. My hope to organize more events such as prairie flower hikes or other events to get more people outside. If you have any ideas or suggestions for activities or events, do not hesitate to email me at [clarkeccb@gmail.com](mailto:clarkeccb@gmail.com). I am eager to start serving the community educating youth about nature and look forward to a great summer!

Scott Pate

AmeriCorps 4-H Environmental Education  
AmeriCorps Member Serving at  
Clarke County Conservation





# Nature Camps at East Lake Park

Learn about the plants and animals of Iowa and have opportunities to learn outdoor skills. All camps will be held at the Redfern shelter at East Lake Park (West Side of Lake above office).

**To participate a registration form must be completed**

**Maximum of 10 children per camp.**

**Camps will be very similar week to week so pick one that works for your schedule.**

**Camp Dates:** *June 24th — 28th (Session 1)*

*July 8th — 12th (Session 2)*

*July 15th — 19th (Session 3)*

**Times:** *Grades 1st — 3rd: 8 am — 10 am*

*Grades 4th — 6th: 10 am — Noon*

*One day outdoor camps coming in late July and August*

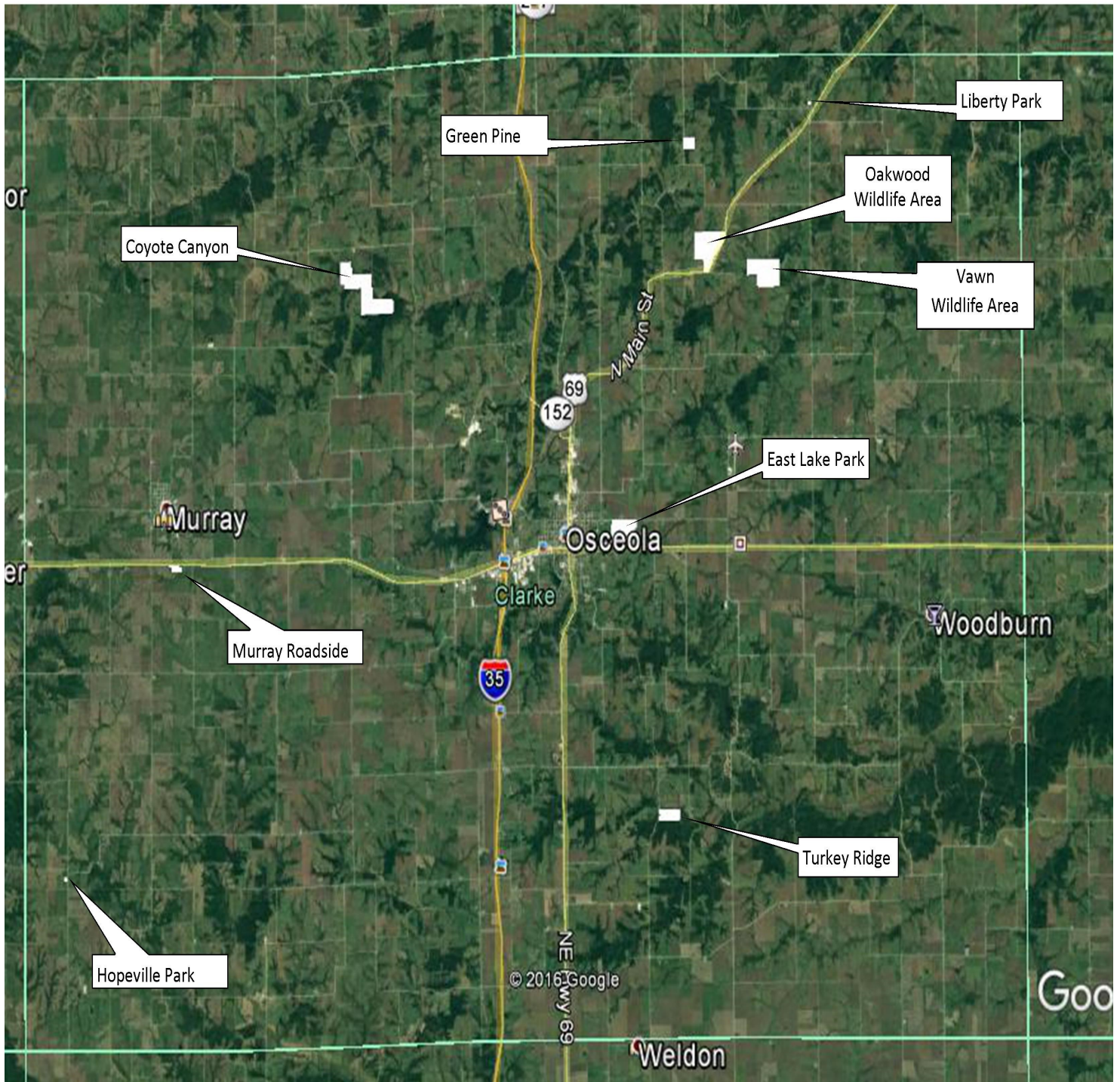
Email Scott at [clarkeccb@gmail.com](mailto:clarkeccb@gmail.com) for a registration form or check Clarke County Conservation on Facebook.

Mail in or email Registration forms a week ahead of each camp week to: **Clarke County Conservation at 100 S. Main street, Osceola, IA 50213**





# Outdoor Opportunity Locations



*Our mission is to provide out door opportunities to the public and promote the conservation, preservation and restoration of our resources.*



## Friends Of Clarke County Conservation

The Friends of Clarke County Conservation Foundation, known as *Friends*, is a tax exempt corporation organized under the Iowa Nonprofit Corporation Act, Chapter 504A of the 1990 Code of Iowa, and the provisions of Section 501(c)(3) of the Internal Revenue Code. The foundation was established in 1997 for the purpose of soliciting and accepting gifts and donations from persons and organizations for developing and enhancing environmental education and conservation projects within the scope of the jurisdiction of the Clarke County Conservation Board.

The goals of the organization are: (1) to support and further the functions of the Clarke County Conservation Board by serving as a vehicle for community involvement, (2) to advise CCCB of the needs of the community regarding facilities and programs, (3) to raise funds for designated projects, and (4) to serve as an organizational base for volunteers.

Categories of membership are determined by the annual dues, which range from Student at \$5.00 to Organizational at \$100, (see enclosed membership form). Membership dues and contributions are tax deductible. Membership in the "*Friends*" foundation is open to everyone regardless of race, religion, creed, national origin, age, gender, or handicap.

An annual general membership meeting is held to elect the "*Friends*" Board of Directors, a seven (7) member board that sets the policies and goals, and generally manages the affairs of the foundation.

### Friends of Clarke County Conservation

#### Membership Application

- ☐ Organization/Business (\$100)
- ☐ Family (\$20)
- ☐ Individual (\$10)
- ☐ Student (\$5)

Name: \_\_\_\_\_

Address: \_\_\_\_\_

Phone: \_\_\_\_\_

E-Mail: \_\_\_\_\_

Date: \_\_\_\_\_

Amount Enclosed: \_\_\_\_\_

☐ Yes! I want to be a part of the "*Friends*" volunteer corps.

Make checks payable to:  
Friends of Clarke County Conservation,  
C/O Clarke Co. Conservation Board  
100 South Main, Osceola, IA 50213